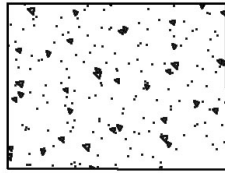
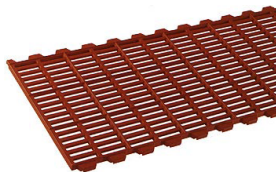


Concrete Inserts



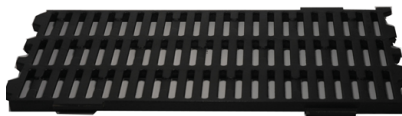
Part #	Description	UPC
FLORFLPICS85	S85 Concrete Insert 22 1/2" x 32"	27390
FLORFLPICS95	S95 Concrete Insert 24" x 32"	27395
FLORFLPUIC2000	S2000 Tapered Concrete Insert 24" x 28"	27860
FLORFLPUIC2002	S2002 Concrete Insert 23 1/4" x 28"	27865

Cast Inserts



Part #	Description	UPC
FLORFLPUISR16106	Top Cast 42" Stall-Ring (Flat Type)	27905
FLORFLPUISR16107	Top Cast 48" Stall-Ring (Flat Type)	27910
FLORFLPUISRS2442	Step Cast 42" Stall-Ring (Raised)	27955
FLORFLPUISRS2448	Step Cast 48" Stall-Ring (Raised)	27960

Black Cast Inserts



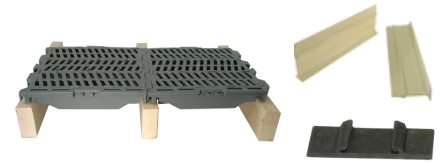
Part #	Description	UPC
FLORGENJDF42X24	42" x 24" Flat Cast Insert	28040
FLORGENJDF48X24	48" x 24" Flat Cast Insert	28045
FLORGENJDR42X24	42" x 24" Raised Cast Insert	28050
FLORGENJDR48X24	48" x 24" Raised Cast Insert	28055

Thru-Flo Flooring



Part #	Description	UPC
FLORGENTF	1X4 Thru-Flo Flooring	28075

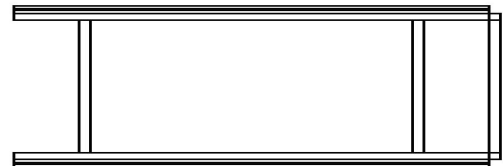
Sure-Step Flooring



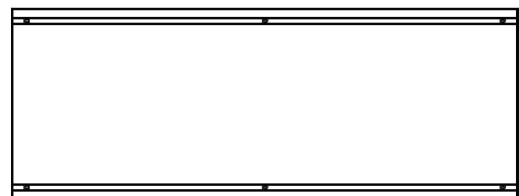
Part #	Description	UPC
FLORGENJD1212B	3/8" Black 12" x 12" Sure-Step Sow Floor	27985
FLORGENJD1212G	3/8" Grey 12" x 12" Sure-Step Sow Floor	27990
FLORGENJD1218B	3/8" Black 18" x 12" Sure-Step Floor	27995
FLORGENJD1824B	3/8" Black 18" x 24" Sure-Step Floor	28000
FLORGENJD1824B.5	1/2" Black 18" x 24" Sure-Step Floor	28005
FLORGENJD1824G.5	1/2" Grey 18" x 24" Sure-Step Floor	28010
FLORGENJD5FR	5" Fiberglass Rail (11' Max Span)	28025
FLORGENJD5FRC	Black Support Clip For 5" Rail	28030

Insert Frames

27925
27930



27935
27940
27945
27950



Part #	Description	UPC
FLORFLPUISRFRA42	42" SS S85 Repair Insert Frame	27925
FLORFLPUISRFRA48	48" SS S85 Repair Insert Frame	27930
FLORFLPUISRFRA70	70" SS Cast & Concrete Frame	27935
FLORFLPUISRFRA84	84" SS Cast & Concrete Frame	27940
FLORFLPUISRFRA95	SS Frame Fits 42" Top Cast & S95 Pad	27945
FLORFLPUISRFRA95	SS Frame Fits 42" Top Cast & S85 Pad	27950